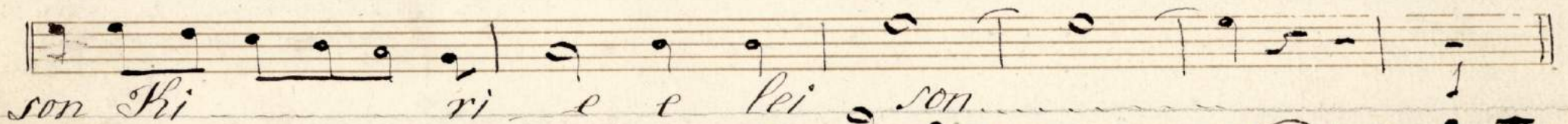
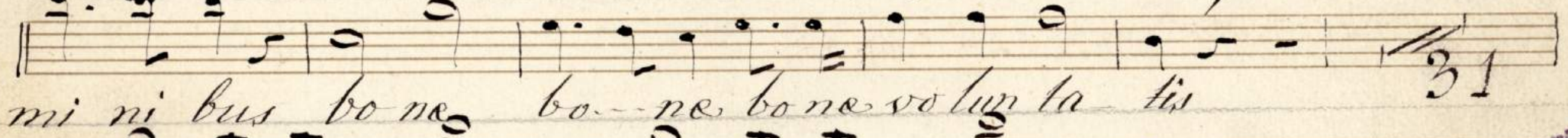


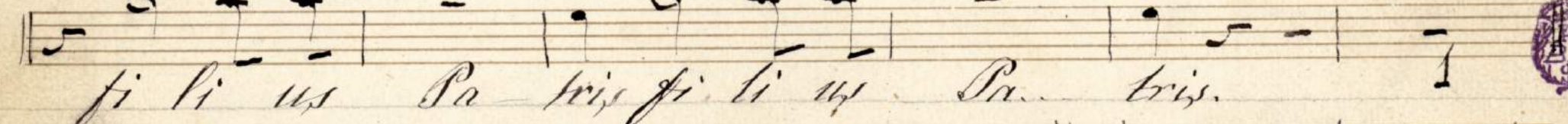
Bajo 2^{do} Misia a 3 voces por D. Ildefonso Jimeno Mtro de =
Capilla de la Catedral Metropolitana de Santiago de Cuba //

All^o mod^{to} $\text{H}\flat$ $\text{C}\sharp$ C 3/3 |  Ki ri e e lei

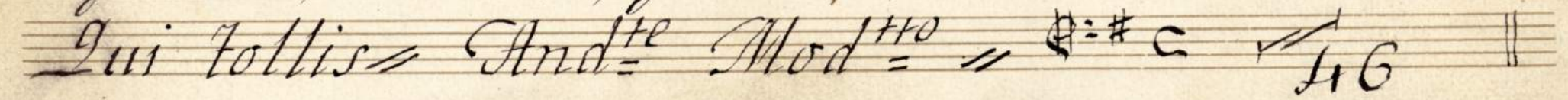
 son Ki ri e e lei son

Gloria = All^o Mo^{to} $\text{H}\flat$ $\text{C}\sharp$ C 3/4 |  Et in ter-ra pax ho-

 mi ni bus bo-ne bo-ne bo-ne vo-lun-ta-tis

 fi-li-us Pa-tris fi-li-us Pa-tris.



Qui tollis = And^{te} Mod^{to} $\text{H}\flat$ $\text{C}\sharp$ C 4/6 | 

Quoniam = All^o $\text{H}\flat$ $\text{C}\sharp$ C 2/4 | 

Handwritten musical score for the first system. It consists of two staves. The upper staff contains the vocal line with lyrics: "Je su chris te Je su chris te Je su chris te Je su chris te". The lower staff contains the instrumental accompaniment. The tempo is marked "farg." (falso) and the key signature is one sharp (F#). The time signature is 6/8. There are two measures of 16 and two measures of 12. The word "tutti" is written above the second measure of the 12-measure section.

Handwritten musical score for the second system. It consists of one staff with a key signature of one sharp (F#). The word "men" is written below the staff. The staff is partially obscured by a piece of tape.

A horizontal strip of tape covering the musical staff.

Handwritten musical score for the third system. It consists of one staff with a key signature of one sharp (F#). The word "In Glo ri-a" is written below the staff. The staff is partially obscured by a piece of tape.

Handwritten musical score for the fourth system. It consists of one staff with a key signature of one sharp (F#). The word "De i Pa tris" is written below the staff.

Handwritten musical score for the fifth system. It consists of one staff with a key signature of one sharp (F#). The word "men Amen" is written below the staff.

Handwritten musical score for the sixth system. It consists of one staff with a key signature of one sharp (F#). The word "A men" is written below the staff. The time signature is 4/4.

Credo

All^o mod^o *110* *Q: #* *C*
Pa trem Pa trem om ni po ten tem

fac to rem Ce li et ter rae fi li um

De i u ni ge ni tum fi li um De i u ni

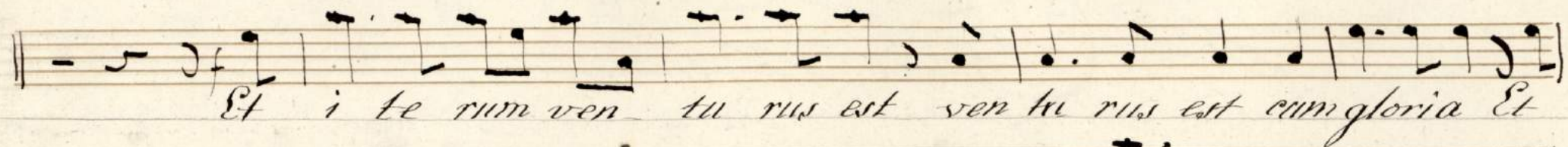
ge ni tum u ni ge ni tum u ni ge ni tum

qui pro pter nos ho mi nes et pro pter nos tram sa lu tem des cen

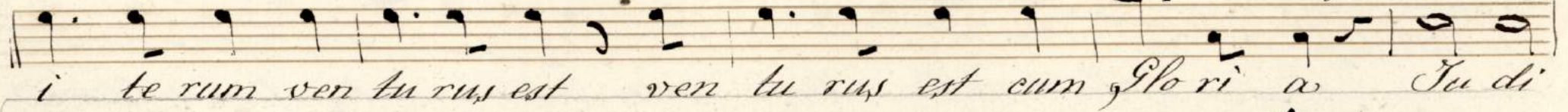
dit de Ce lis *Et in car* *115 # 3* *4* *26*

All^o Mod^o *110 #* *C*
Et re sur re cit ter ti a di e se cum dum scri p tu ras

se det se det ad dex te ram Pa tris



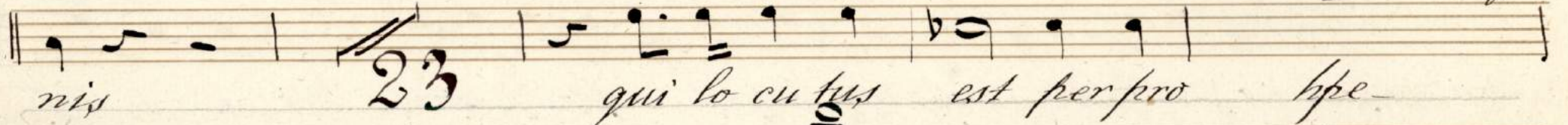
Et i te rum ven tu rus est ven tu rus est cum gloria Et



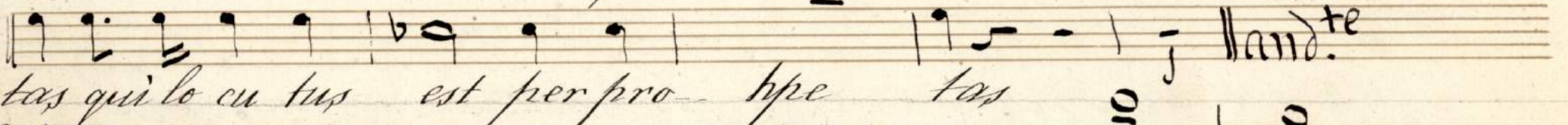
i te rum ven tu rus est ven tu rus est cum Glo ri a Ju di



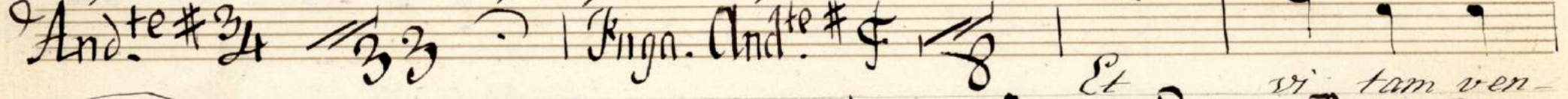
ca re vi vos et mortu os non e rit fi



nis $\frac{2}{3}$ qui lo cu tus est per pro hpe



tas qui lo cu tus est per pro hpe tas



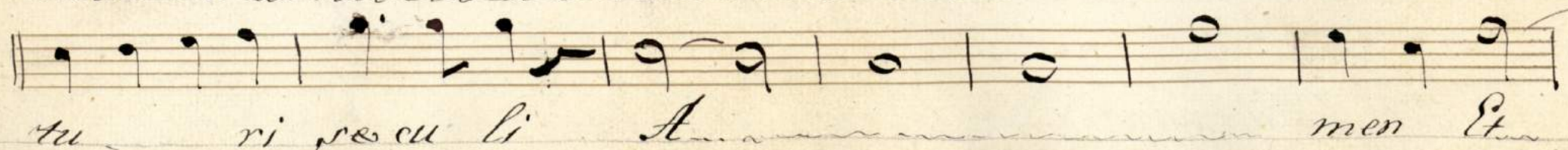
And. $\frac{3}{4}$ Kinga. And. $\frac{3}{4}$ Et



tu ri se cu li A



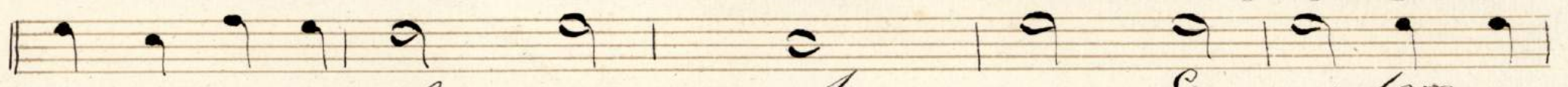
men A men. Et vi tam ven



tu ri se cu li A men Et



vi tam ven tu ri se



mun cu li A men Et vi tam ven

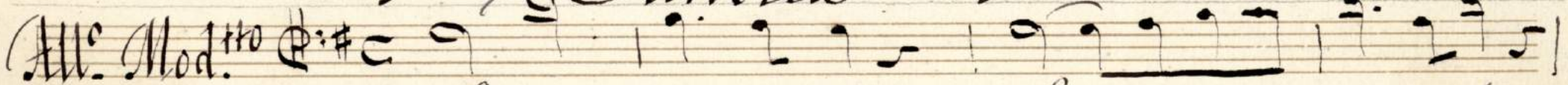


tu ri se cu li A men



A men A men

Sanctus

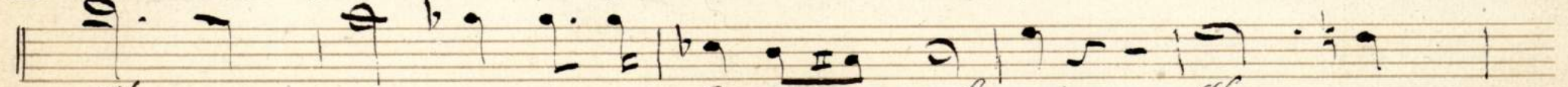


All. Mod. $\text{♩} = 120$ $\text{♩} = \text{♯}$ C

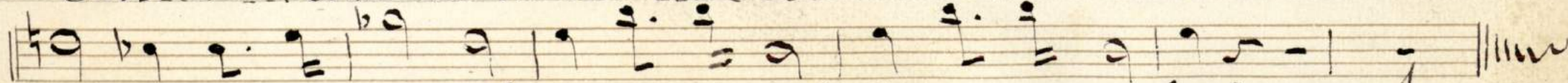
Sanctus Sanctus



Do mi nus De us Sa ba hot



Ite san na in ex Ce l sis Hos



san na in ex Ce l sis in ex cel sis

Benedictus Facet

Agnus

Mod.^{to} 16

Agnus Dei qui
totis peccata mundi donabis pacem donabis
pacem. donabis pacem.
pacem donabis pacem pa-
cem.